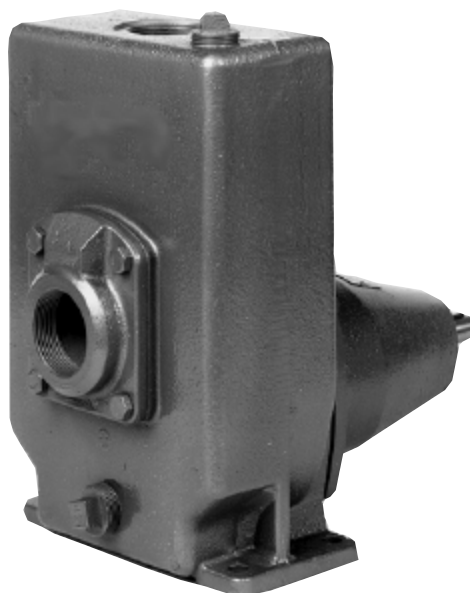


# KGE

## Self-priming centrifugal pump



### System characteristics

The KGE is a self-priming centrifugal pump with radial (semi-open or closed) impeller, overhung mounted on a bearing pedestal. If a spacer type coupling is used, the pump can easily be dismantled without it being necessary to disturb the pipings or to move the motor.

The KGE series is available in different drive possibilities:

KGE: pump with bare shaft for clockwise rotation

KGEL: pump with bare shaft for counter-clockwise rotation

KGEF: pump with flanged motor (close coupled)

### Applications

The KGE is suitable for clean and polluted liquids, which are non-corrosive to cast iron, including water, oils, petrol and all kind of chemicals. Draining building excavations, emptying ponds, ditches and swimming-pools, water extraction for irrigation and watering, aboard ships as bilge, deck wash and general service pumps. Emptying pits and throughs containing wastewater, handling fuels, condensate extraction pumps.

### Pump specifics

- Self-priming
- Suitable for a wide range of duties
- Non-return valve mounted
- Oil bath for the mechanical seal (preventing seal from running dry)
- Dust tight, grease lubricated bearings

### Technical data

Maximum capacity:	80 m <sup>3</sup> /h (50Hz) 100 m <sup>3</sup> /h (60Hz)
Maximum delivery head:	60 m (50Hz) 53 m (60Hz)
Maximum liquid temperature:	95°C
Maximum operating pressure:	8 bar (800kPa)
Maximum speed:	3600 rpm

### Materials

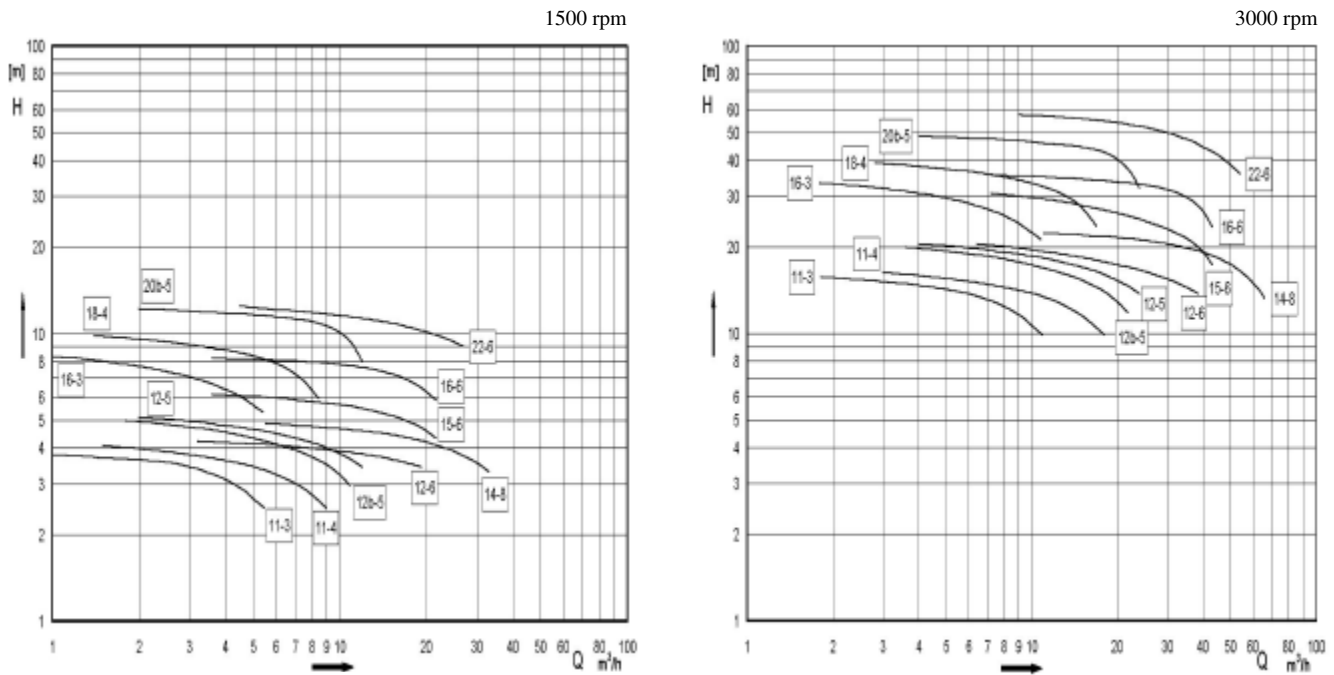
<b>Pump casing</b>	Cast iron	Cast iron
<b>Impeller*</b>	Cast iron	Bronze
<b>Mechanical seal cover</b>	Cast iron	Cast iron
<b>Pump shaft</b>	17% Chrome steel	
<b>Mechanical seal material</b>	Carbon to Ceramic	

\* 11-3, 11-4 Polypropylene or Bronze

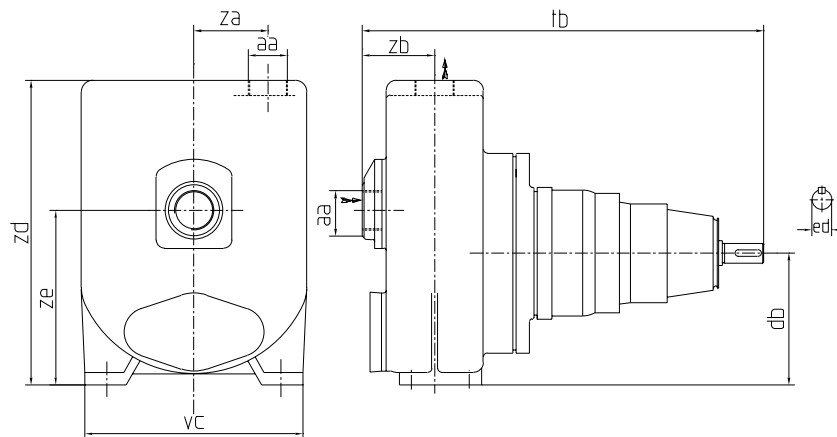


JOHNSON PUMP

# Hydraulic performance



## Dimensions



Rp/mm	aa	ac	ae	ai	ak	db	vc	zb	zd	ze	Weight
11 - 3	1 1/4"	-	-	-	-	80	190	70	255	132	15
11 - 4	1 1/2"	-	-	-	-	80	190	80	290	132	17
16 - 3	1 1/4"	-	-	-	-	100	225	83	280	160	26
12b - 5	2	-	-	-	-	100	225	98	350	160	30
12 - 5	2	-	-	-	-	100	225	98	350	160	30
12 - 6	2 1/2"	-	-	-	-	100	225	114	360	180	40
15 - 6	2 1/2"	-	-	-	-	132	247	105	380	212	40
16 - 6	2 1/2"	-	-	-	-	132	247	105	380	212	40
14 - 8	DN 80	135	160	8	M 16	132	255	116	375	212	46
18 - 8	1 1/4"	-	-	-	-	160	265	90	370	212	65
20b - 5	2	-	-	-	-	160	320	105	460	224	90
22 - 6	2 1/2"	-	-	-	-	180	345	120	550	265	110



**JOHNSON PUMP**

Johnson Pump B.V.



Dr. A.F. Philipsweg 51. P.O. Box 372, NL-9400 AJ Assen. Tel +31 592 37 67 00. Fax +31 592 37 67 10

Ph: +91 33 32951385 Fax: 033 24818193 adm i n@axi omtech. co. i n